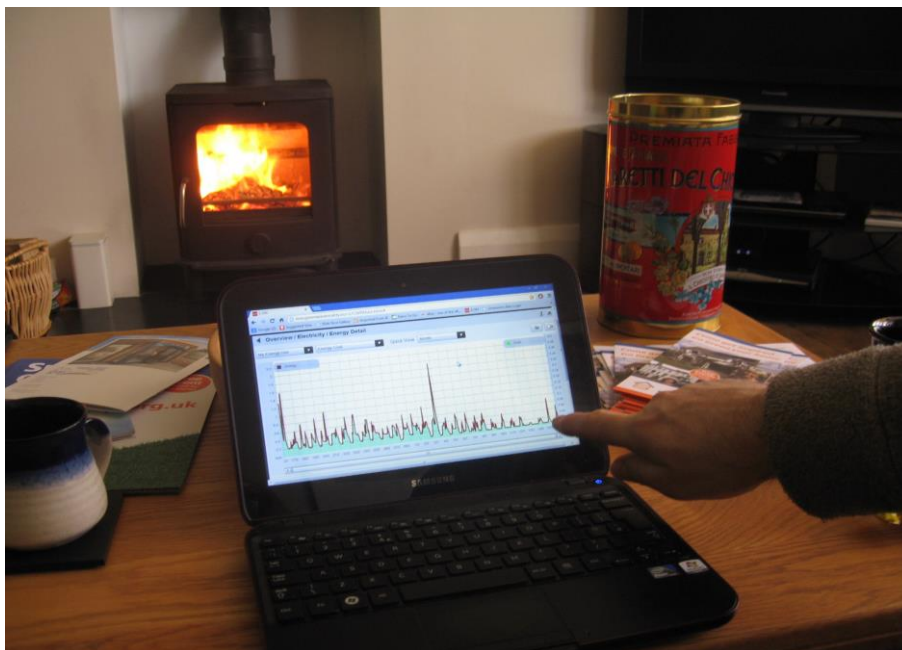


10 reasons to refurbish an older home

Is it worth the hassle refurbishing an older home to make it much more energy efficient? Here are 10 reasons why it may feel like the healthy option:

1. Other people's fuel bills go up, yours go down. So you don't dread those winter bills.
2. Your house value is increased, so you are financially better off.¹
3. Your home is future-proofed against increasingly scarce energy supply, so you get peace of mind.
4. Mould growth is reduced or eliminated, so you breathe better.
5. Draught stripping and double glazing insulate you against external noise, so your home is more peaceful.
6. Double glazing increases your security.
7. Draughts are reduced, so you feel warmer and more comfortable.
8. Your home stays warm 24/7, reducing chances of illness. And because all the rooms are warm, you can use all your home.
9. Your home produces less environmentally damaging emissions, helping protect the planet and your kids.
10. Your home is insulated against summer sun, so it need no longer overheat.
Happy days!

To find out more about refurbishing an older home, visit www.superhomes.org.uk



After refurbishment enjoy the comfort as well as the savings

Photo courtesy of www.superhomes.org.uk

Notes for Editors:

For more information, please phone Gordon Glass on 01908 256 922 or email Gordon using firstname@superhomes.org.uk format.

1. Effect of EPC ratings on house prices

Improve an old home in England from EPC G to A/B rating and its value increases by an average 14% says a June 2013 [DECC report](#). This is fantastic news for people who have retrofitted their homes. However, an April 2013 [EU report](#) found no increase in house values in Oxford (p115) so expect regional differences. The DECC report says that houses with better EPC ratings on average have a higher sale price per square metre, when other factors (including built form, age and geographical region) are eliminated. However, the report cautions that this should not be seen as simply cause and effect, as homes that have higher EPCs are more likely, for example, to have had other home improvement, such as refitted kitchens, which increase the value.

2. The Big Picture

The UK government set a target of a 60% carbon reduction by 2050 in 2005 (this was subsequently increased to 80%). The UK's 25 million homes currently account for 27% of UK carbon emissions. It is estimated that as many as 80% of all homes that will be in standing in 2050 have already been built. This means that retrofitting existing homes is a priority if the government's target is to be met. The Government's Green Deal, which will offer loans for energy efficiency improvements, launched in January 2013. Repayments will be on a 'pay as you save' basis, helping overcome any upfront financial obstacles to making the improvements.

3. The Sustainable Energy Academy

The Sustainable Energy Academy (SEA) promotes education and action to reduce the carbon footprint of buildings and communities. It is currently spearheading SuperHomes - a network of older homes which have been refurbished to the highest standard of energy efficiency. The aim is to create a network of 500 SuperHomes that are local and publicly accessible by 2020.

4. SuperHomes

SuperHomes are older homes that have been refurbished to the highest standards of energy efficiency – resulting in greater comfort, significantly lower running costs and a reduction in carbon emissions of at least 60%. SuperHomes harnesses the enthusiasm of pioneering households to demonstrate the benefits of switching to low energy living. SuperHome Open Days showcase today's technologies, providing a touch and feel experience to inspire visitors to action. They also let visitors see for themselves both the challenges and the financial and environmental savings to be made from making the change. Over 50,000 people have already visited a SuperHome. Currently there are 167 registered SuperHomes and 90% of the population in England live within 40 minutes of one. The network includes a wide range of older property types including Victorian houses, a thatched cottage, an 18th century converted mill and some properties that produce more energy than they use.

4. Partners

SuperHomes enjoys the support of the Esmée Fairbairn Foundation, WWF, Energy Saving Trust, National Energy Foundation, Megaman and SIG Energy Management.