

## News In Brief

### Parish Benches

New seating benches have recently been added on KGV Playing Field and the Memorial Garden. The bench by the Bank Tree at Ibthorpe has been renovated by Gary Edwards.



### Village Shop

The Grand Opening of the rebranded convenience store in Hurstbourne Tarrant took place on a very wet & windy November 29th ... but it was great to see such support for Vinoth and his team, who are striving to make it a one-stop shop for all the community's shopping needs. If there's something not stocked, please do let staff know, and they will do their best to accommodate. If you haven't yet been, it's certainly worth a visit.



### Dene Green precautions

Having taken advice from Test valley Borough Council, work will shortly commence on the entrance to Dene Green to minimise the risk of unauthorised vehicular access with the installation of 'dragon's teeth' wooden bollards and two gates. Access on foot will not be changed.

### The Hurstbourne Fund

Another flyer will have dropped through your letterbox, asking parishioners their views on setting up a Community Fund, to raise money in support of projects, activities and residents of our community. If feedback is positive, it is hoped that the Fund will be established early in 2019.



*Please join us for port and mince pies after our December Parish Council meeting at the HTCC Monday 17th December at 7.30pm.*

## Annual Pumpkin Competition

Congratulations to Chris Randall who won the village pumpkin competition on 28th October, with a monster fruit weighing in at a bouncing 135 lbs, or 61.2 kg for modern folk.



Seeds will be available in the spring for anyone who would like to take part in 2019. If you would like to join in the fun, please contact Alison Willis [willisalison1971@gmail.com](mailto:willisalison1971@gmail.com)



Swifts is a social and support group that meets each month in Hurstbourne Tarrant Community Centre. Coffee, tea and cakes and an informal setting make for a great opportunity to catch up with neighbours and meet new friends. The group welcomes everyone, whichever part of the Parish you live in and meets on the second Monday of the month, **10.30am to 12noon**. ★ NB the Christmas Lunch on 10th December is from 12-2pm

## And finally, blowing our own trumpet !

Hurstbourne Tarrant Parish Council was recently recognised with an award for our newsletter, by the Hampshire Association of Local Councils. Congratulations to our clerk Mims Edwards who received the accolade at a recent conference in Winchester, and along with Mark Thomas, they are the team that does all the hard work putting the publication together.



# Hurstbourne Tarrant Parish Council UPDATE

For Hurstbourne Tarrant, Ibthorpe, Upton & Pill Heath  
[www.hbt.org.uk](http://www.hbt.org.uk)



Issue 4

Winter 2018/19

December 2018

## Chairman's Corner

As Christmas approaches, it seems a lifetime ago that we had endless long hot days. As a Parish Council, we have continued to be busy - recently co-opting a new councillor to bring us back up to our quota of 6 members, creating the Centenary Garden, installing benches around the Parish to give people the chance to sit and rest, as well as marching on with the Village Design Statement. Your Parish Council is a dedicated team of volunteers, and we really do want to make a difference in the villages, for all who live and work here. Every now and then, there will be things which upset the equilibrium, which generally we can sort out ourselves, but all in all, this really is a great place and I'm very proud of what our little community achieves on a regular basis. Let's hope Brexit doesn't change that! I wish you all a Happy Christmas, and a peaceful 2019.



**Ian Kitson – Chairman HBT Parish Council.** Tel: 736733

## Dates For Your Diary

### Parish Council Meetings

All are welcome - meetings are held in the Community Centre at HBT, at 7.30pm

Monday 21st January 2019  
Monday 18th February 2019  
Monday 18th March 2019  
Monday 15th April 2019

If you need to contact the Clerk, please ring 01264 736677 or email: [theparishclerk@hbt.org.uk](mailto:theparishclerk@hbt.org.uk)

If you are a Facebook user, search for

@HBTParishCouncil  
[www.hbt.org.uk](http://www.hbt.org.uk)



## Centenary Garden



Nearly forty parishioners attended the opening of the Armistice centenary memorial garden on the corner of Dines Close. On 3rd November, Rev Trevor Lewis blessed the 'field of remembrance' trough and a poppy cross and rose were laid for each of the fifteen men from this Parish who died as a result of the Great War. The new gate entrance from the Ibthorpe road was decorated with recycled plastic poppies made by our local children. It is intended that the garden will develop over the next year

and a fund-raising event to cover the cost of shrubs is being planned for the new year. The Parish Council wishes to thank everyone involved with the creation of the garden, and who have given their time, skill and donated items, and we hope that everyone, young and old, will enjoy making use of this area to sit, play, reflect, remember.







The **HbeeT Wildlife Group** will be working to establish flowering shrubs on the environmental ‘islands’ on Dene Green and at KGV playing field for next spring. Volunteers have put in a lot of time and effort to get this project started on the green. It may look unkempt at times (and ripe for parking!) but the green and its ‘islands’ of unmown areas harbour over 80 different species of wild flower, and provides a home for various wildlife, from the tiniest bugs to larger creatures such as hedgehogs. The group has also contributed to the Watercress and Winterbournes consultation as well as organising two very successful local bird walks led by Dave Ellis.

#### Help a bee – donate a shrub !

Can you offer a flowering shrub to the HbeeT project ? We will be adding to the plantings on Dene Green to encourage pollinators and other wildlife and if anyone has any spare plants or would like to donate a shrub to the project, all contributions would be greatly appreciated - please contact Mark Thomas - 07815 082326.



#### Meet your new Parish Councillor ... John Partridge

John is a retired chartered surveyor with experience in agricultural property management and residential sales. He has lived in Ibthorpe for nearly 40 years and was co-opted onto the Parish Council in November having already been involved with the Village Design Statement project, as he wants to ensure that the character of the villages is preserved and enhanced. In his spare time, John enjoys using his vintage tractor to top grass fields and for transporting wood he has cut with his chainsaw.



#### Playing Fields and Public Areas

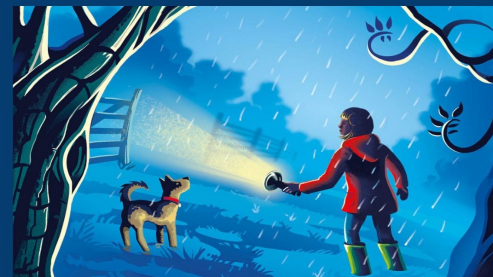
Thank you to all dog walkers who clear up after their pets. We must remain vigilant, especially in public and play areas around the Parish. The play equipment on KGV is inspected by RoSPA annually and routine checks are made through the year. If you spot any problems, please report these to the Parish Council.

#### Dolomans Lane Dog Waste Bin



The addition of a bin on Dolomans Lane has proved successful. To save money, this bin is emptied by volunteers every two weeks. As such, please can we ask that people respect the purpose of the bin and its use is restricted to bagged dog waste.

**Stop Press!** Biodegradable poo bags have been made available around KGV for dog walkers ‘caught short’ without one. Please do make use of them to bag & bin your dog’s waste. *Thank you.*



#### CLOCKS BACK - POOP’S UP !

Since the clocks have gone back, there has been a notable increase in dog waste being left on KGV playing field as well as other areas around the village. Please remember - it is an offence not to clear up after your pet in public areas and we ask dog walkers to be extra vigilant at this time of year.

Always pick up after your dog and if you are walking and see a mess that has not been cleared up, please bag it and put it in one of the 8 (red & green) bins around the Parish which can be used for this purpose.

The school uses the playing field for sports and break times and it is essential we respect this space.

*Thank you - Hurstbourne Tarrant Parish Council*

#### Village Design Statement

Everyone should have received a copy of the flyer in November, publicising the questionnaire which will have been delivered to all parishioners by the time you are reading this. Hopefully you’ve had time to either fill it in by hand or go online to consider the questions being asked. Please ensure you complete it by 31st December.

The open meetings will be on 25th and 26th March at the HTCC & RBL respectively. These will give residents chance to see how the Village Design Statement is shaping up.

There is a lot more information on the website -

[www.hbt.org.uk/villagedesignstatement](http://www.hbt.org.uk/villagedesignstatement) or <https://bit.ly/2DNldZt>

Hurstbourne Tarrant, Ibthorpe and Upton

**Village Design Statement**

**Fill in the Questionnaire or the Online Survey**

Scan the QR code  
Go To  
[bit.ly/hbtvds2018](http://bit.ly/hbtvds2018)

Come to the March Open Meetings  
See the Results  
Have Your Say

[www.hbt.org.uk](http://www.hbt.org.uk)  
[villagedesignhbt.org.uk](http://villagedesignhbt.org.uk)

#### Rights of way in our Parish ... and frequently asked questions

##### How do I know where I can walk ?

We can walk on designated rights of way - these include footpaths, bridleways, restricted byways and byways open to all traffic (BOATs) and we are fortunate to have a great selection of these in our Parish. The best way to check is to buy an Ordnance Survey Explorer Map (131) or Landranger (185). You can order a tailored map, centred on a place of your choice, by visiting the Ordnance Survey website. The official record is Hampshire County Council’s ‘Definitive Map’ which you can access on line via the Hantsweb website <https://bit.ly/2rLSH62>

Rights of way should be marked with arrows similar to these:



##### What is the difference between a ‘Permissive Path’ and a ‘Right of Way’ ?

A right of way marks a route that is written in law. Some landowners also allow people access to other areas by designating a ‘Permissive (or Concessionary) Path’. Permissive paths may be within a stewardship scheme, whereby the landowner agrees to providing access in return for a support/maintenance payment, or they may just be happy for people to walk on a path across their land. These paths will be signed by the landowner - if no waymarks can be seen, it is best to assume there is no right of way.

##### What is the situation regarding dogs and rights of way ?

Walkers can take their dogs on rights of way, but they should be under ‘close control’. This can be taken to mean close to their owner, be on the right of way and return when called. Where livestock is present, or when in the vicinity of public areas (such as children’s play equipment), dogs should be on a lead. Please respect other walkers who may be nervous of dogs and clear up after your pet - not only in public areas, but wherever people or livestock could come into contact with dog mess. Whilst the law requires landowners to provide access for people, there is no obligation to modify stiles or gates for dogs.

##### Can I ride my bicycle on a right of way ?

Bicycles can be ridden on Bridleways and Byways. Mobility vehicles, wheelchairs and pushchairs can be used on all rights of way, although paths may not be suitable for this use if there are stiles or uneven surfaces.

##### What should I do if I find a problem with a right of way ?

Obstructions on rights of way should be reported to Hampshire County Council (visit [www.hants.gov.uk](http://www.hants.gov.uk) and look for ‘report a problem’). Please also let the Parish Council know as we can often help to get a problem resolved quickly. You can do this via [www.hbt.org.uk](http://www.hbt.org.uk) and click on Parish Council/request for service, or by phone to Mark Thomas on 07815 082326.